

Job Name/Location:

Tag #:

Date:

For: ☐ File ☐ Resubmit

PO No.:

☐ Approval ☐ Other _____

Architect:

GC:

Engr:

Mech:

Rep:

(Company)

(Project Manager)



LMAN187HVT

Multi F Art Cool™ Mirror

18,000 Btu/h Indoor Unit



Performance:

Nominal Cooling Capacity (Btu/h)	18,000
Nominal Heating Capacity (Btu/h)	20,800

Cooling Nominal Test Conditions:

Indoor: 80°F DB/67°F WB

Outdoor: 95°F DB/75°F WB

Heating Nominal Test Conditions:

Indoor: 70°F DB/60°F WB

Outdoor: 47°F DB/43°F WB

Electrical:

Power Supply (V/Hz/Ø)	208-230/60/1
Rated Amps (A)	0.30

Piping:

Liquid Line (in, OD)	1/4
Vapor Line (in, OD)	1/2
Drain OD, ID (in)	13/16, 5/8
Temperature Sensor	Thermistor

Features:

- 24-Hour on/off timer
- Auto operation
- Auto restart
- Chaos Swing
- Inverter (variable speed fan)
- Jet Cool/Jet Heat
- Plasma air purifying system
- Self-cleaning indoor coil
- Condensate sensor connection
- Group control

Included Accessories:

- Wireless Handheld Remote Controller - AKB73635606

Optional Accessories:

- ☐ LG Programmable Thermostat - PREMTB10U
- ☐ Simple Controller with Mode (Black) - PQRCVCL0Q
- ☐ Simple Controller with Mode (White) - PQRCVCL0QW
- ☐ Simple Controller without Mode (Black) - PQRCHCA0Q
- ☐ Simple Controller without Mode (White) - PQRCHCA0QW
- ☐ AC Smart Premium - PQCSW421E0A
- ☐ ACP Premium - PQCP22A1
- ☐ ACP Standard - PQCP22N1
- ☐ LonWorks Gateway - PQNFB16A1
- ☐ BACnet Gateway - PQNFB17B0
- ☐ Dry Contact Unit (1 contact, 24 VAC external power) - PQDSB1
- ☐ Dry Contact Unit (2 input, power from indoor unit) - PQDSBC
- ☐ Dry Contact for third party thermostat - PQDSBNGCM1

Operating Range:

Cooling (°F WB)	57-77
Heating (°F DB)	59-81

Unit Data:

Refrigerant Type	R410A
Refrigerant Control	EEV
Sound Pressure ² H/M/L (±3 dB(A))	37/33/28
Primary Filter	Washable Pre-filter
Secondary Filter	Plasma
Net Unit Weight (lbs)	35
Shipping Weight (lbs)	40

Fan:

Type	Cross Flow
Quantity	1
Motor/Drive	Brushless Digitally Controlled/Direct
Airflow Rate H/M/L (CFM)	572/501/434

Notes:

1. Acceptable operating voltage: 187V - 253V.
2. Sound Pressure levels are tested in an anechoic chamber under ISO Standard 1996.
3. See Engineering Manual for sensible and latent capacities.
4. All power/communication cable to be minimum 18 AWG, 4-conductor, stranded, shielded and must comply with applicable local and national code.
5. Power wiring cable size must comply with the applicable local and national code.
6. This unit comes with a dry helium charge.
7. Corresponding refrigerant piping length is in accordance with standard length of each outdoor unit and the level difference is 0 ft. All capacities are net with a combination ratio between 95 - 105%.
8. Must follow installation instructions in the applicable LG installation manual.

Inverter



Job Name/Location:

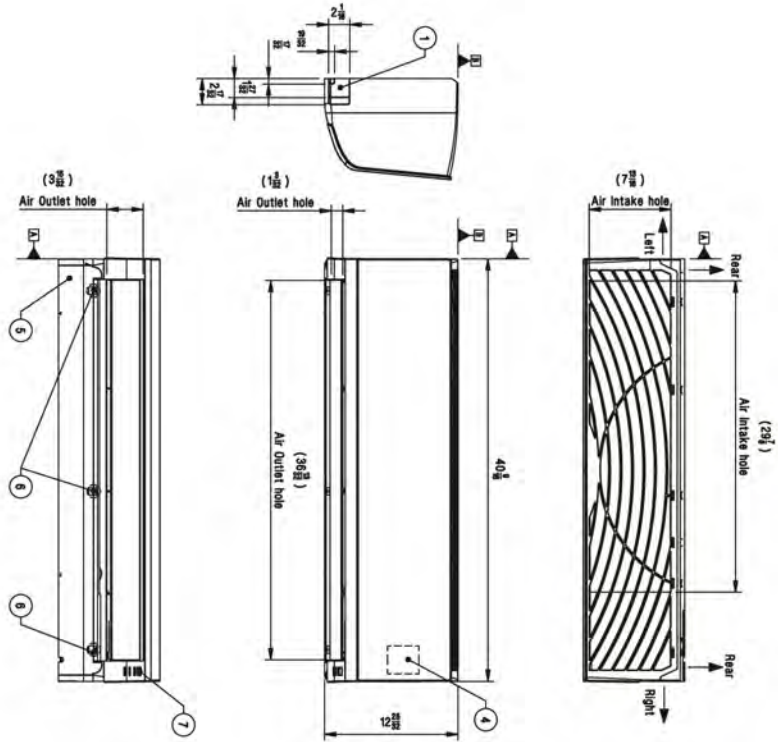
LMAN187HVT Multi F Art Cool™ Mirror 18,000 Btu/h Indoor Unit



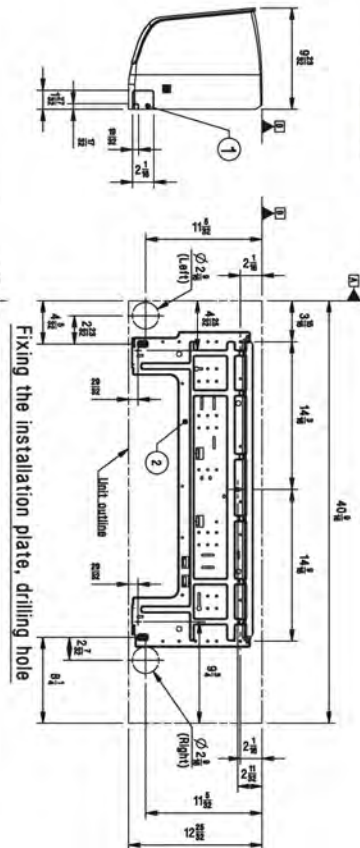
Tag #:

Date:

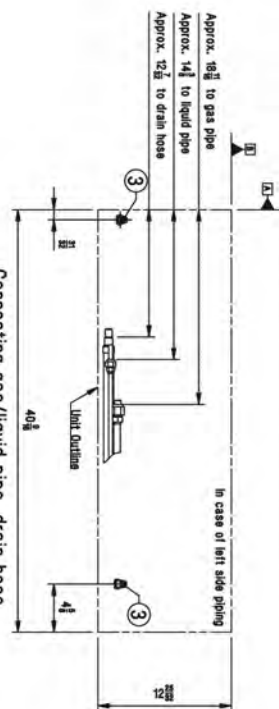
PO No.:



3D View



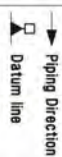
Fixing the installation plate, drilling hole



Connecting gas/liquid pipe, drain hose

Unit: Inch

Symbols



No.	Name	Description
7	Remote Controller Signal Receiver	For Wireless type
6	Screws of Decoration Cover	-
5	Decoration Cover	-
4	Terminal Block for Power supply and Communication	Inside decoration cover
3	Drain hose connection	-
2	Installation Plate	-
1	Refrigerant/Drain pipe and cable routing hole	Knock-out type